

The Ashtons logo is displayed in white text on a dark blue rectangular background in the top right corner. The word "Ashtons" features a green swoosh under the letter 'A'.

Ashtons

21 Eldon Terrace YO31 8NQ

£1,150 PCM

2



1



2



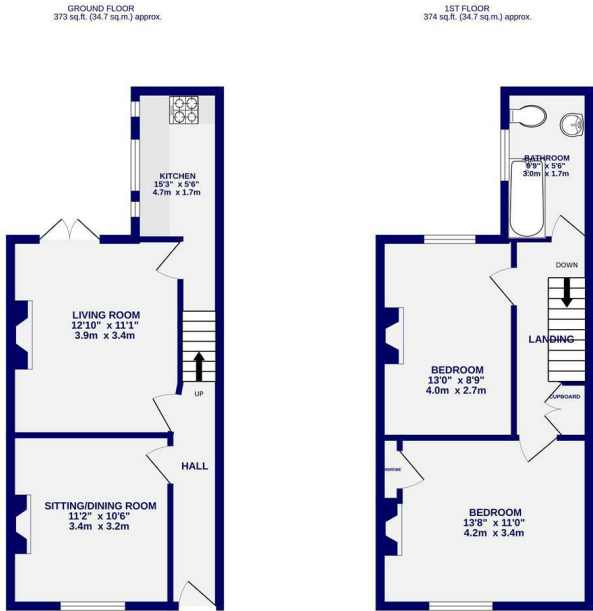
D



A two bedroom mid terrace house within walking distance of the City Centre, Nestle & York Hospital. Offered for let unfurnished the accommodation comprises of front reception room with wood flooring and ornamental fireplace; rear reception with fitted storage and patio doors leading the rear yard; contemporary kitchen with electric oven, hob, fridge freezer, plumbing for a washing machine; to the first floor are two double bedrooms, house bathroom with shower over bath and fitted storage cupboard on the landing. The property benefits from shared side alley with access to the street, ideal for bikes. On street permit parking.

Available 15th May

Deposit £1250 / 12 Month Tenancies / Council Tax Band B / EPC D / Pet Considered



TOTAL FLOOR AREA: 747 sq.ft. (69.4 sq.m.) approx.
Whilst every effort has been made to ensure the accuracy of the floorplan, measurements of rooms and any other areas are approximate. It is advised to visit the property and take measurements of the actual space.
Note: Areas are not responsible for any errors, omissions or misstatements. This plan is for illustration purposes only and should be used as such by any prospective purchaser. The fixtures, fittings and appliances shown have not been tested and are provided as is their condition.
Made with Metronix 10004